

Fixtures @ Chelmer Park

08/02/14 - M2, M4, MV, MEG, L1, L2 & L4



**Takeaway Night
Pizza
This Saturday!**

Results 01/02/14

M1s v Cambridge Uni 1	(L)	Lost 3-4	Millane, Veerapalan x 2
M2s v Royston 1	(L)	Won 2-1	Brady, Thom
M3s v Maldon 1s	(L)	Lost 2-4	Clough, King
M4s v Maldon 2	(L)	Lost 3-2	Baker, Goode
M5s v Uni of Essex 2	(L)	Lost 0-3	
MVs v Indian Gymkhana Vets	(L)	Lost 1-6	Wooding
MEGs v Southgate Tankards	(F)	Won 5-0	De Mello, Kitchiner x 4
L2s v Cambridge Uni 1	(L)	Lost 3-2	Duffin, Smith E
L3s v Wapping 4	(L)	Won 4-2	Houlder, Mann, Wilkinson x 2
L5s v East London 6	(L)	Won 3-0	Dailly, Hay, Thompson

Quiz Night

TEAM	1	2	3	4	5	6	7	8	9	10	11	12
CRUCIAL	9	4/13	20/33	8/41	9/49	9/58	9/67	10/77	7/84	2		
BUNNY'S BOOBIES	8	3/11	20/31	8/39	8/47	8/55	6/61	10/71	7/78	3		
ONION MASSIVE	8	3/11	10/21	9/30	8/38	4/47	10/57	10/67	38/75	4		
DIESEL'S DOG BULLDOGS	10	3/13	20/33	8/41	8/49	6/55	5/60	10/70	5/75	4		
GIN AND TONIX	8	5/13	20/33	9/42	8/50	9/59	9/68	10/78	9/87	1		

A very enjoyable night

was had by all at this year's quiz with a very close finish with Gin and Tonix beating Crucial by a mere three and half points to take first place. All the teams were within a few points of one another with the bottom team DDB (ask Buddy

what that stands for) having been within touching distance of the prizes for most of the quiz. It was good to see a team from the Back to Hockey Ladies of the 5th X1, they need to learn that playing your Joker on one of my sports rounds is not normally that productive!

It was a good turnout and made a reasonable profit for the club so thank you all for attending. As ever thank you to Bunny (aka "Anthea") and Nigel for their assistance.

See you all next year, spread the word, let's have a few more teams.

Fred

2013/14 - Social Calendar...so far!

8 th Feb	Pizza Takeaway Night
8 th March	Chinese Takeaway Night
TBC	Men's Dinner
TBC	Ladies Night
9 th May	CHC Golf Day
17 th May	CHC Ball

To receive bulletins direct to your inbox along with important club information subscribe to the [mailing list](#).

If you've got any comments, suggestions for future articles, announcements or just generally any questions then please drop us an email at newsletter@chelmsfordhc.org.uk. **Kat & Anna**

CHELMSFORD HOCKEY CLUB

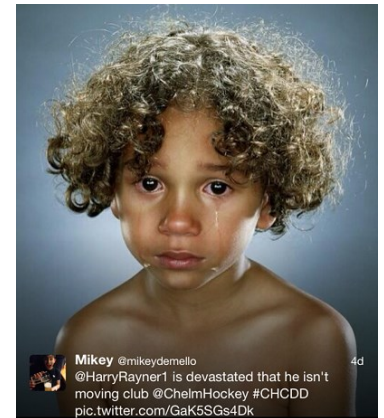
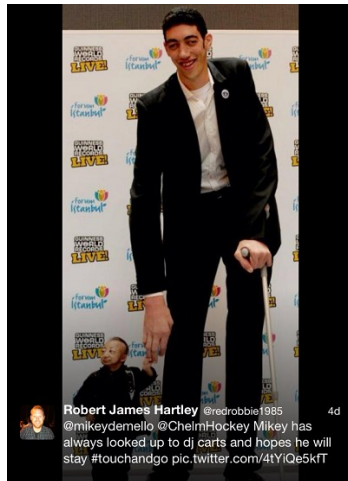
DEADLINE DAY



@ChelmHockey



If you missed all the action on Twitter last Friday then here are the highlights!



14 hours - 130 rumours, zero transfers!

TS&SO



James Stock @jamesstock89
Amidst the intense speculation, @AlexRumbold missed it all because his music was on too loud! #CHCDD @ChelmHockey pic.twitter.com/z3vppAajJx 4d



Robert James Hartley @redrobble1985 4d
Chelmsford Hockey @TFanger currently having a medical for his new club but initial reports don't look good #CHCDD pic.twitter.com/ray8pww4h



Tom Fanger @TFanger 5d
@ChelmHockey 2's want to off load @OgrapsN due to spending more time finding the ring instead of the net pic.twitter.com/vY36gLBMJc

60 Seconds with...David "Kitch" Kitchiner

Age: 42 **Occupation: IT Manager**

1) Given that you've been playing hockey for a couple of years or so now, what is that makes you keep coming back for more every season?

If I keep still for too long I stiffen up.

2) Ed de Mello spoke just a few weeks ago of the animosity that may or may not exist between you as the pair of you battle it out for top goals scorers in the Men's and Evergreens. Would you care to comment on this?

I love Ed and admire his natural predatory instincts and improvisational abilities in front of goal. Some of the things he does on the hockey pitch are truly astonishing. If there is any animosity between us, and I'm not saying there is, then it comes from a lingering dispute about which one of us is the longest in the showers.

3) Having played for (probably) every feasible team in the club, as well as some that no longer exist, what's been your most memorable year for Chelmsford in the short time you've been at the club?

Like most of the Evergreens I can barely remember where I live, let alone past seasons. Though, I've been told that gaining promotion to the EHL and winning almost every competition we entered in 1996/97 was pretty good. My sources tell me that it was a great time off the pitch too, with an eclectic mix of old and young, home-grown Chelmsford boys plus two South Africans, an Aussie and a car full of Bangladeshis.

4) Is it true you taught Jonny Wilcox, and indeed most of the current men's side of the club, everything they know?

I'd like to accept the plaudits for that but the reality is that I taught them everything I know. It didn't take long and, regrettably, it's repeatedly got them into trouble over the years, but the rest they had to learn for themselves. Jonny was an exceptional student and always keen to learn. I recall him eagerly seeking extra tuition from some of the older members of the squad on his first tour to Dublin. It gives me great satisfaction to see the next generation now benefitting from his experience and wisdom.

5) Which will come first, an Evergreen's card or your retirement?

Who said anything about retirement? I'll have to play for at least another twenty-one years because the next Evergreens card will be the one Gerald receives from the Queen.

6) Finally, what is it about Chelmsford HC that has made you a club stalwart?

Just like Peter Pan, I look good in green.



Editor's
Note:

We would like to point out and apologise that not all facts in this edition of the Newsletter are correct. A certain Mr Kitchiner has, for the second season in a row, been economic with the truth when it comes to his age...in fact I don't think he's aged since last year! In his own words (and mind) he IS the Peter Pan of CHC!

CHC BI-ENNIAL BALL...

It's fast approaching!

Now's the time to get your tickets booked, or even reserve a whole table. Get your teammates and your partners involved and dust off your DJs, posh frocks and your dancing shoes.

All the details and contacts are on the next page...

SEASON
AWARDS



£45
PER
TICKET

CHELMSFORD HOCKEY CLUB

LIVE BAND
AND
RAFFLE

Saturday
17th May 2014

Chelmsford
County Hotel

7pm 'til Midnight
Dress code: Black Tie

TICKETS AVAILABLE FROM:

Rebecca Budd : beccabudd@googlemail.com

Sophie Green: segreen1@hotmail.com